

State of Wyoming Corner Record

(In compliance with the CORNER PERPETUATION AND FILING ACT, Wyoming Statutes, 1977, Section 38-11-101, et. seq., and the Rules and Regulations of the Board of Registration for Professional Engineers and Professional Land Surveyors.)

Reverse side of this form may be used if more space is needed.

Record of original survey and citation of source of historical information (if corner is lost or obliterated). Description of corner monumentation evidence found and/or monument and accessories established to perpetuate the location of this corner. Sketch of relative location of monument, accessories, and reference points with course and distance to adjacent corner(s) (if determined in this survey). Method and rationale for reestablishment of lost or obliterated corner.

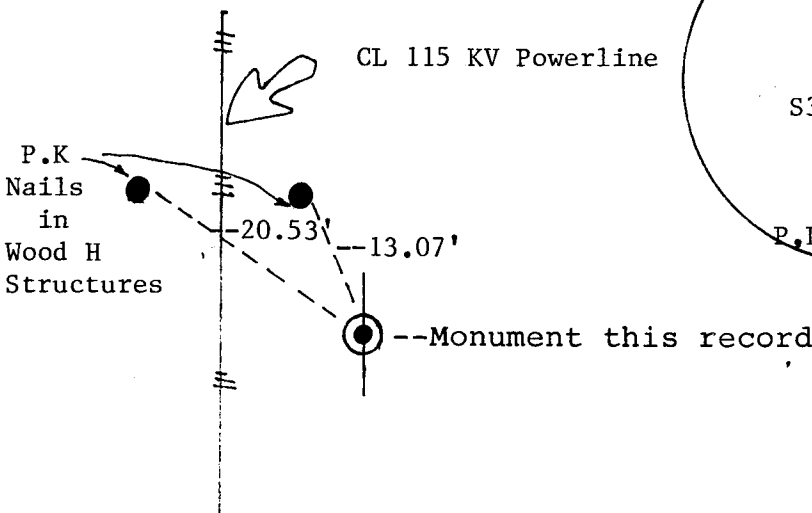
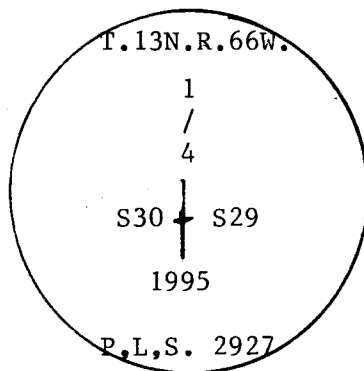
G.L.O. Record: Set Granite Boulder 14 x 10 x 6 for 1/4 Sec. Corner, Henry G. Hay, U.S. Deputy Surveyor, August 28, 1870.

Subsequent Record: Certified Land Corner Recordation Form filed April 6, 1983 by Mr. John A. Steil, Wyoming P.L.S. 2500, indicating a found stone monument with 1/4 cut in west side.

Found: 15" x 10" x 5" granite stone firmly set, faintly marked 1/4 on west face.

Set: 2 1/2" Galvanized iron pipe, 26" in the ground with a 3 1/4" Brass Cap stamped as noted below. Buried original stone along East side of monument as a memorial. Set a 5' steel fence post witness 1' north.

Brass Cap Markings



SUPPLEMENTAL TIES
**Not to scale

LARAMIE COUNTY CLERK
 CHEYENNE, WY.
 '95 SEP 25 AM 10 53
 169541

Date of Field Work: August 7, 1995 Office Reference: _____ Job No. 2-1918.95

CROSS INDEX DIAGRAM

A	1	2	3	4	5	6	7	8	9	10	11	12	13	14	15	16	17	18	19	20	21	22	23	24	25
B																									
C	8		5		4				3					2											
D																									
E																									
F																									
G	7		6		9				10					11											
H																									
I																									
J																									
K																									
L	18		17		16				15					14											
M																									
N																									
O																									
P	19		20		21				22					23											
Q																									
R																									
S																									
T	30		29		28				27					26											
U																									
V																									
W																									
X																									
Y	31		32		33				34					35											
Z																									
	1	2	3	4	5	6	7	8	9	10	11	12	13	14	15	16	17	18	19	20	21	22	23	24	25

Firm/Agency, Address

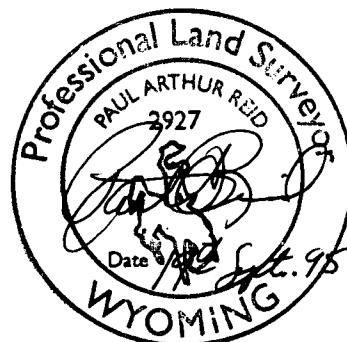
PREPARED BY:

Paul A. Reid, P.L.S.
A.V.I., P.C.
2035 Westland Road
Cheyenne, WY 82001

(307) 637-6017

This corner record was prepared by me or under my direction and supervision.

SEAL & SIGNATURE



BOOK 1407

1023

Corner Name: E 1/4 Section: 30 T. 13N. R. 66W. 6th P.M. Cross-Index No.: T-5
SBRPEPLS/PLSW: March 1994 (CLCR_SJA)